

The upper reaches of the river are narrow and twisting, suitable for shorter canoes and kayaks.

Shiawassee River Water Trail Water Works Park to Lytle Road Park

Designated a National Water Trail by the U.S. National Park Service in 2020, the Shiawassee River Water Trail flows 88 miles from the village of Holly to the city of Chesaning. It begins in Water Works Park on Broad Street and ends at Showboat Park close to M-57 and the many features of Chesaning.

The upper reaches of the river meander through the historic mill towns of Holly, Fenton, Linden and Byron and rural Genesee County. In this section it is an intimate river, narrow and twisting, suitable for shorter canoes and kayaks. The flow is slow

LAFF Pathway

The LAFF Pathway initiative began in 2009 with a group of interested residents who shared a desire to have a nonmotorized trail that extends from Argentine Township through Fenton Township and the City of Linden to the City of Fenton. Thus, the LAFF acronym was created.

Phase One, the Argentine Township Trail, is a 2.2-mile section completed in 2020. It connects Argentine Township to the City of Linden, and its 22 miles of sidewalks, travelling through the Linden Public Schools campus.

Phase Two, the State Bank Trail, is a 2-mile section running along Silver Lake Road, connecting the City of Linden with 62 miles of Fenton's sidewalk system. With a planned completion in 2024, safe, nonmotorized transportation will have access to Silver Lake Beach, Clover Beach, Deer Run Soccer Park, Linden County Park, several schools, and many other parks in Fenton and Linden.

Work on Phase Three is now underway, identified as the Fenton Road Corridor, which will connect with other trail systems to the north and east.

with time to catch sight of beaver, eagles, and surprised wildlife around each bend.

A quiet and pleasant paddle, this winding river route is rated intermediate to beginner skill level. Be cautious of motorized boat traffic when crossing Lake Ponemah and be prepared to portage around the dams in Fenton, Linden and Byron. Turn to the next page to continue your adventure from Lytle Road Park to Chesaning. For more detailed maps and estimated trip lengths between access points visit: www.ShiawasseeWaterTrail.org/tripmaps

LAFF Pathway Access			
Access Site	Parking	Restrooms	Water
1 Argentine Twp. Trailhead	Yes	No	No
2 Linden High School	Yes	No	No
Shiawassee River Water Trail Access			
1 Water Works Park	Yes	Portable	No
2 Fish Lake Road Launch	Yes	No	No
3 Strom Park	Yes	No	No
4 Bush Park South	Yes	No	No
5 Lake Ponemah DNR Launch	Yes	Vault	No
6 Linden Mill Pond Launch	Yes	Yes	No
7 Bridge Street Launch	Yes	No	No
8 Hogan Rd Bridge Launch	Yes	No	No
9 McCaslin Lake Rd Launch	Yes	No	No
10 Byron Ball Fields Launch	Yes	No	No
11 Walnut Hill Camp (private)	Yes	Yes	Yes
12 Geack Rd Park Launch	Yes	Yes	No
13 Shiatown Park Launch	Yes	Vault	No
14 Vernon Landing	Yes	No	No
15 Lytle Rd Park Landing	Yes	Vault	No

Trails Legend

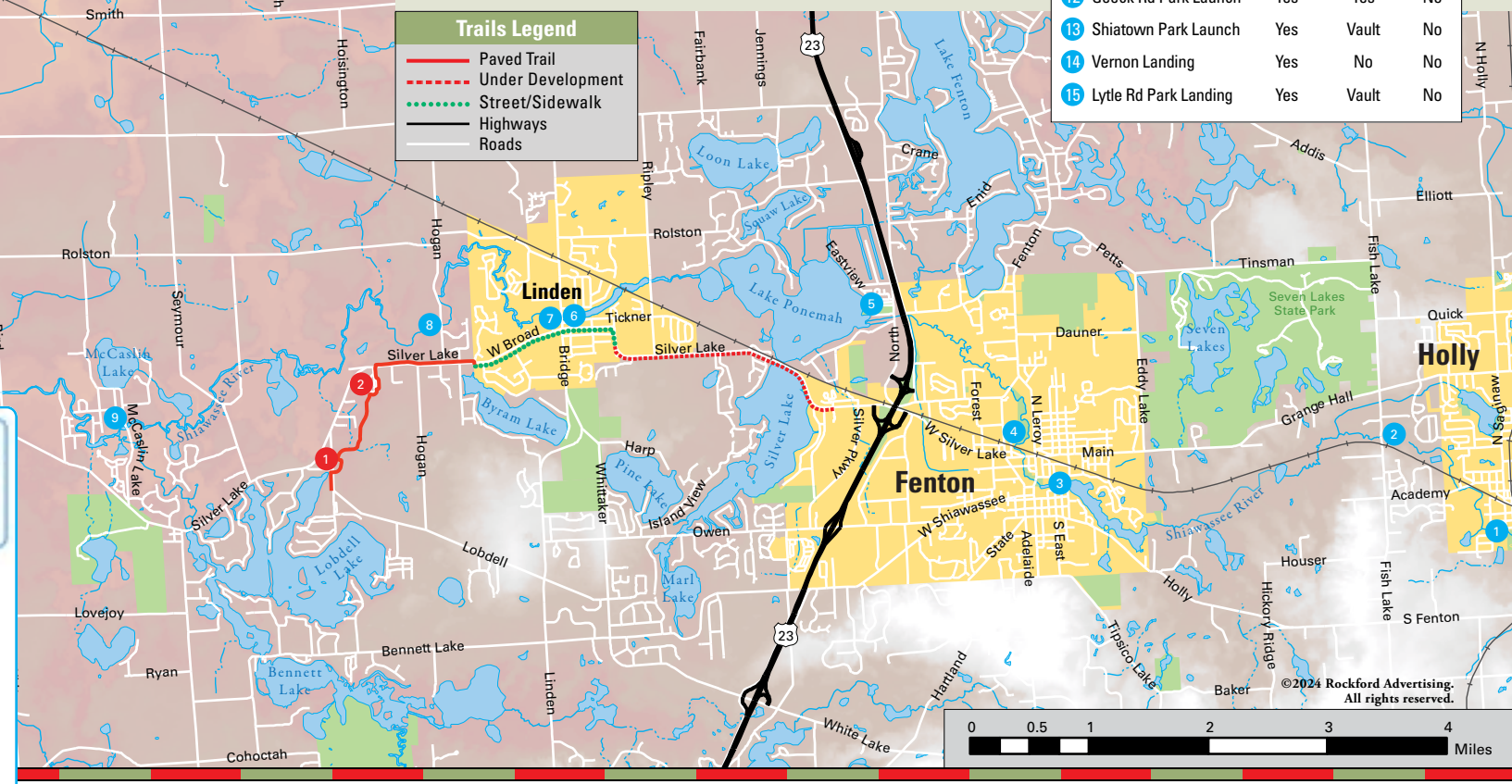
Paved Trail

Under Development

Street/Sidewalk

Highways

Roads





ACORN

WEALTH ADVISORS

Noah C. Morgan, MBA, CFP® Private Wealth Advisor
810.373.6509 noahmorgan@acornwa.com
405 S. Leroy Street • Fenton • AcornWealthAdvisors.com



"Talk with us to learn more about your pathway to a healthy retirement."

LAFF Pathway

Linden • Argentine Township • Fenton • Fenton Township • Multi-Use Recreational Pathway

Connecting Communities

Donate to LAFF Pathway



SLPR
SOUTHERN LAKES
PARKS & RECREATION

laffpathways.com

Staying Active is What We Do!
Check out our Program Brochure.
(810) 714.2011
www.SLPR.com

Michigan Trails Magazine 2024 • www.MiTrails.org • ©2024 Rockford Advertising. All rights reserved.